

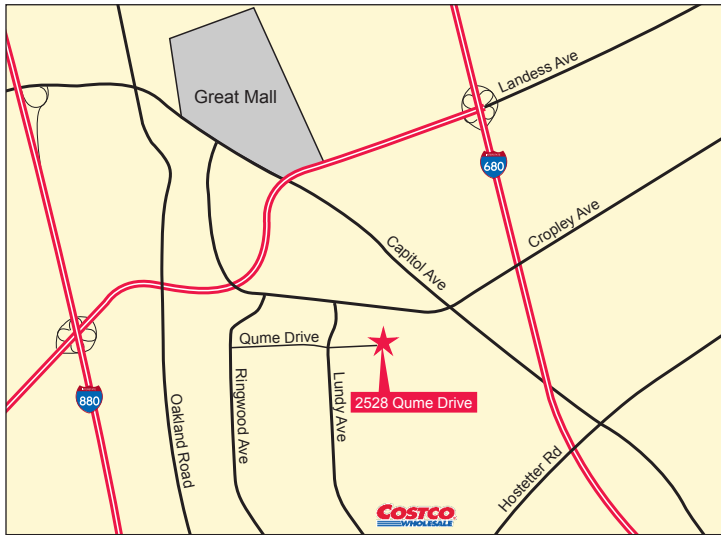
# San Jose Office/R&D Unit for Lease/Sale

2528 Qume Drive #6, San Jose



## ±4,905 Square Feet Available

We are pleased to offer the following space:



- ◆ 100% Drop Ceiling
- ◆ 10' Ceilings
- ◆ Kitchen
- ◆ Interior Restrooms
- ◆ Large Training Room
- ◆ Near Retail Amenities (Great Mall, Costco, Restaurants)
- ◆ Close Proximity to Light Rail
- ◆ Easy Access to Highway 680 and Montague Expressway
- ◆ Built in 2006
- ◆ Available October 1, 2018

Derek Yep Director 408.987.4106 [dyep@ngkf.com](mailto:dyep@ngkf.com) CA RE License #01476099

**Newmark  
Knight Frank**

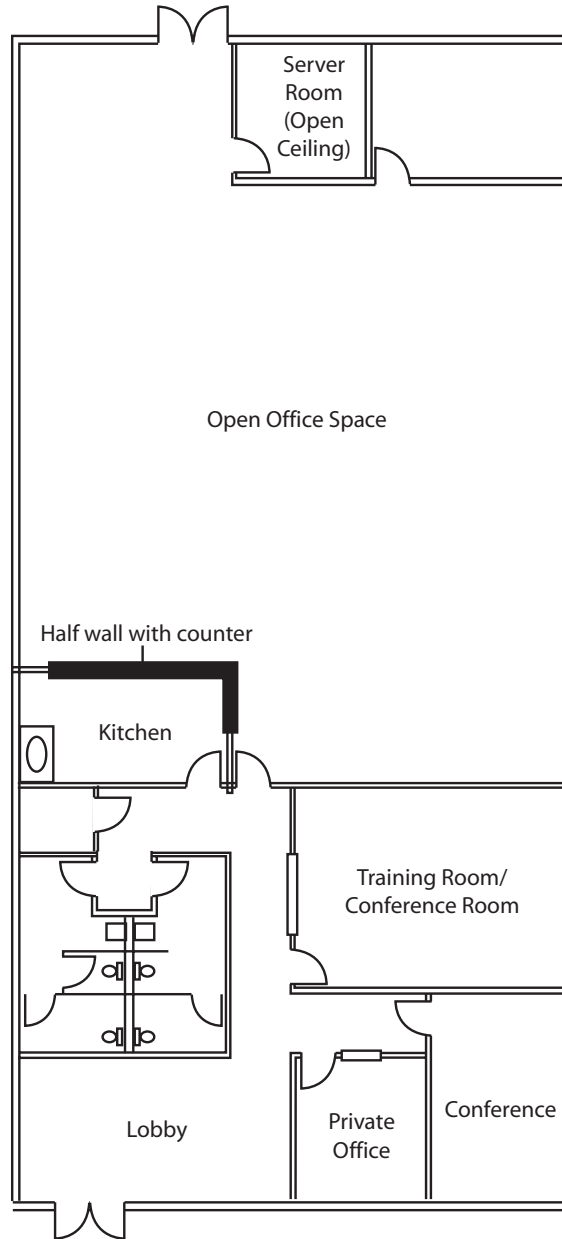
3055 Olin Avenue, Suite 2200, San Jose, CA 95128 [www.ngkf.com](http://www.ngkf.com)

# San Jose Office/R&D Unit for Lease/Sale

2528 Qume Drive #6, San Jose



## Premises Floor Plan\*



NOT TO SCALE

Derek Yep Director 408.987.4106 [dyep@ngkf.com](mailto:dyep@ngkf.com) CA RE License #01476099

**Newmark  
Knight Frank**

3055 Olin Avenue, Suite 2200, San Jose, CA 95128 [www.ngkf.com](http://www.ngkf.com)

Procuring broker shall only be entitled to a commission, calculated in accordance with the rates approved by our principal only if such procuring broker executes a brokerage agreement acceptable to us and our principal and the conditions as set forth in the brokerage agreement are fully and unconditionally satisfied. Although all information furnished regarding property for sale, rental, or financing is from sources deemed reliable, such information has not been verified and no express representation is made nor is any to be implied as to the accuracy thereof and it is submitted subject to errors, omissions, change of price, rental or other conditions, prior sale, lease or financing, or withdrawal without notice and to any special conditions imposed by our principal.

18-0923-07/18