

# Free Standing Office/R&D Building for Lease

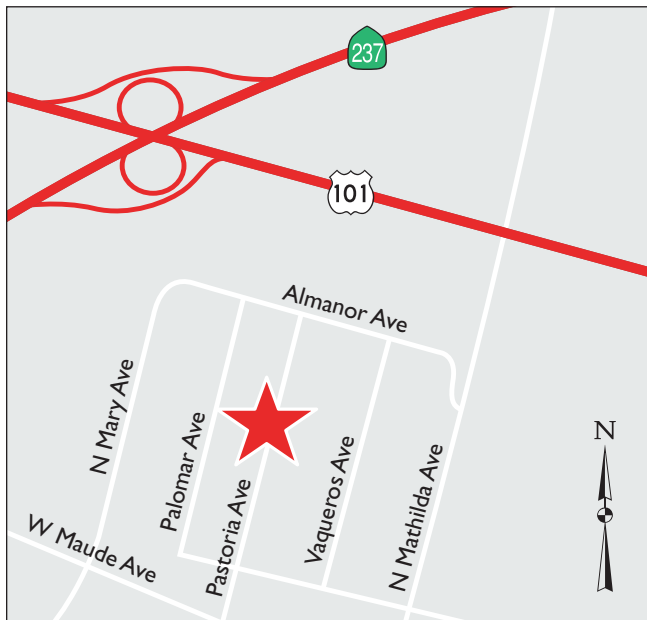
715 N. Pastoria Avenue

Sunnyvale, CA



## ±11,716 Square Feet Available

We are pleased to offer the following space:



- ◆ 12' Drop Ceiling Throughout
- ◆ 100% HVAC / Sprinklers
- ◆ Expenses Less Than \$0.33 per Square Foot!
- ◆ 3,000 Amps / 480V / 3 Phase - Additional Power Available
- ◆ Showers
- ◆ Server Room with Dedicated AC
- ◆ Partially Furnished
- ◆ Adjacent to 1.3 Million SF Pathline Park
- ◆ 3.3/1000 Parking with Additional Street Parking
- ◆ Local/Responsive Ownership
- ◆ Call for Pricing & Touring Instructions

**Tom Sweeney** 408.982.8493 [tsweeney@ngkf.com](mailto:tsweeney@ngkf.com) CA RE License #00989779

**Lori Sweeney** 408.982.8491 [lsweeney@ngkf.com](mailto:lsweeney@ngkf.com) CA RE License #01204105

**Derek Yep** 408.987.4106 [dyep@ngkf.com](mailto:dyep@ngkf.com) CA RE License #01476099



3055 Olin Avenue, Suite 2200, San Jose, CA 95128

[www.ngkf.com](http://www.ngkf.com)

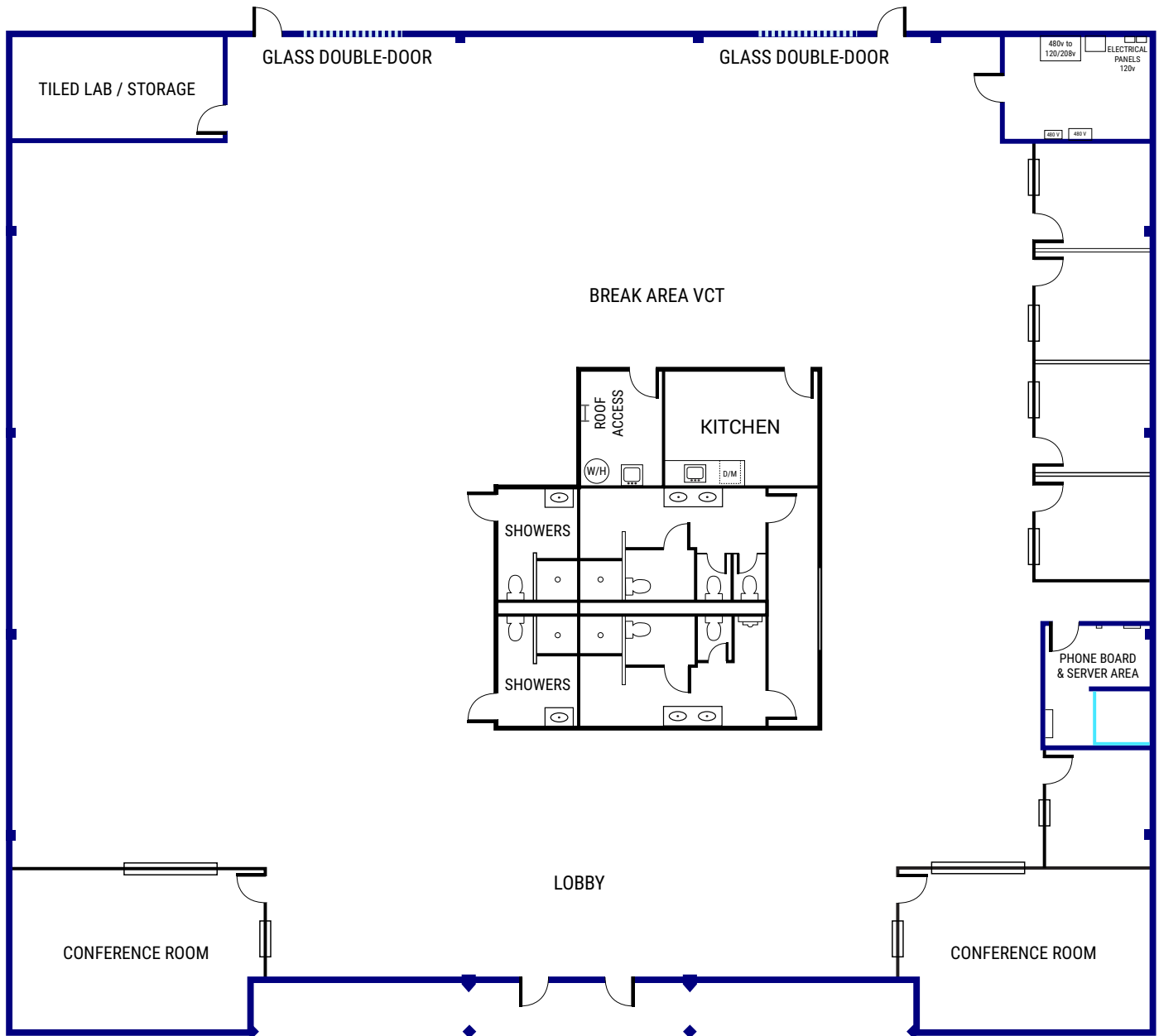
# Free Standing Office/R&D Building for Lease

715 N. Pastoria Avenue

Sunnyvale, CA

715 N. PASTORIA AVENUE

±11,716 SF



**Tom Sweeney** 408.982.8493 [tsweeney@ngkf.com](mailto:tsweeney@ngkf.com) CA RE License #00989779

**Lori Sweeney** 408.982.8491 [lsweeney@ngkf.com](mailto:lsweeney@ngkf.com) CA RE License #01204105

**Derek Yep** 408.987.4106 [dyep@ngkf.com](mailto:dyep@ngkf.com) CA RE License #01476099



3055 Olin Avenue, Suite 2200, San Jose, CA 95128

[www.ngkf.com](http://www.ngkf.com)



# Free Standing Office/R&D Building for Lease

715 N. Pastoria Avenue

Sunnyvale, CA

## Interior



**Tom Sweeney** 408.982.8493 [tsweeney@ngkf.com](mailto:tsweeney@ngkf.com) CA RE License #00989779

**Lori Sweeney** 408.982.8491 [lsweeney@ngkf.com](mailto:lsweeney@ngkf.com) CA RE License #01204105

**Derek Yep** 408.987.4106 [dyep@ngkf.com](mailto:dyep@ngkf.com) CA RE License #01476099

3055 Olin Avenue, Suite 2200, San Jose, CA 95128

[www.ngkf.com](http://www.ngkf.com)

