

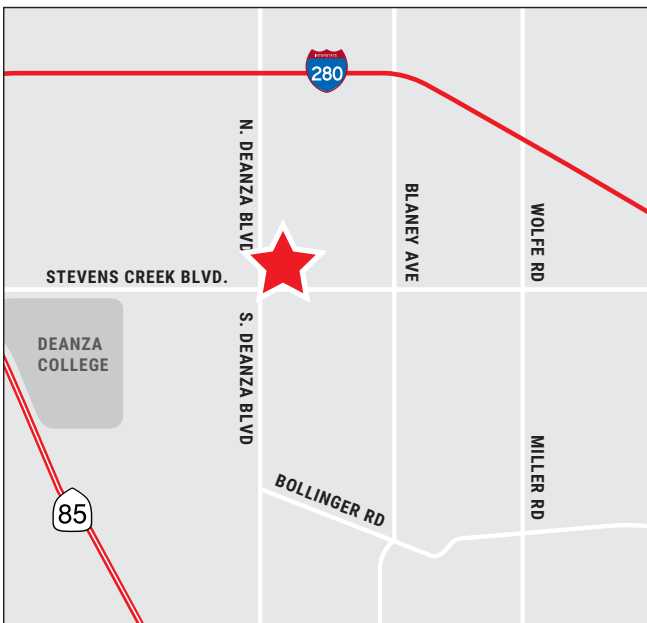
# Office Suite for Sublease

10020 N. DeAnza Blvd, Suite 200  
Cupertino, CA



## Suite Size: ±3,324 RSF

As exclusive agent(s), we are pleased to offer the following space:



- ◆ Centrally Located in Cupertino at the Corner of Stevens Creek and DeAnza Blvd
- ◆ Furniture Available
- ◆ Monument Signage on DeAnza Blvd
- ◆ Easy Access to Highways 280 and 85
- ◆ Walking Distance to Numerous Restaurants and Retail Amenties
- ◆ LED: January 31, 2021 (Longer term available with Landlord)

**Derek Yep** 408.987.4106 [dyep@ngkf.com](mailto:dyep@ngkf.com) CA RE License #01476099

**Lori Sweeney** 408.982.8491 [lsweeney@ngkf.com](mailto:lsweeney@ngkf.com) CA RE License #01204105

**Tom Sweeney** 408.982.8493 [tsweeney@ngkf.com](mailto:tsweeney@ngkf.com) CA RE License #00989779

**Conor Boone** 408.987.4110 [cboone@ngkf.com](mailto:cboone@ngkf.com) CA RE License #02089370



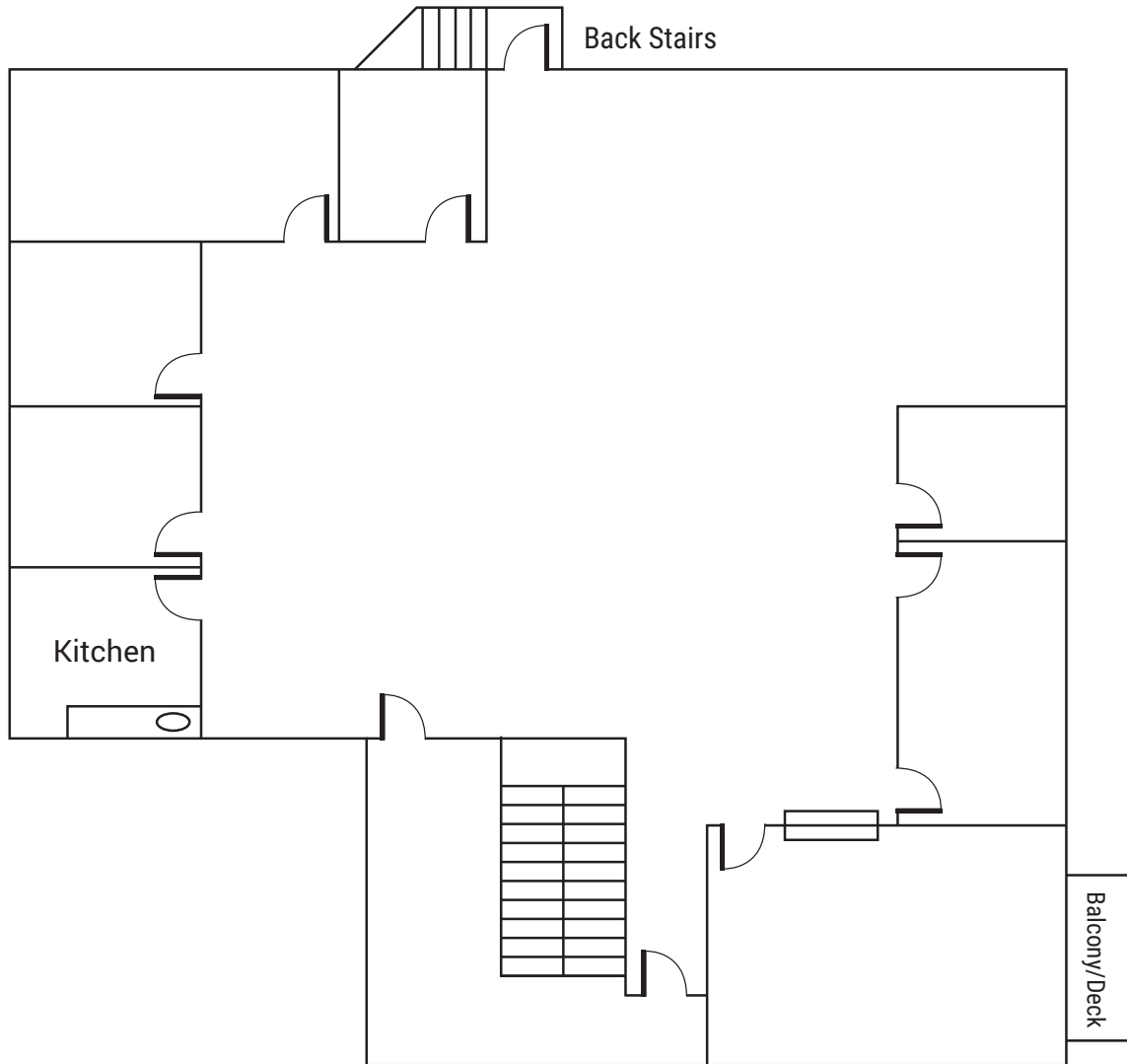
3055 Olin Avenue, Suite 2200, San Jose, CA 95128

[www.ngkf.com](http://www.ngkf.com)

# Office Suite for Sublease

10020 N. DeAnza Blvd, Suite 200  
Cupertino, CA

Floor Plan  
±3,324 RSF



\*Not drawn to scale

**Derek Yep** 408.987.4106 [dyep@ngkf.com](mailto:dyep@ngkf.com) CA RE License #01476099  
**Lori Sweeney** 408.982.8491 [lsweeney@ngkf.com](mailto:lsweeney@ngkf.com) CA RE License #01204105  
**Tom Sweeney** 408.982.8493 [tsweeney@ngkf.com](mailto:tsweeney@ngkf.com) CA RE License #00989779  
**Conor Boone** 408.987.4110 [cboone@ngkf.com](mailto:cboone@ngkf.com) CA RE License #02089370



3055 Olin Avenue, Suite 2200, San Jose, CA 95128

[www.ngkf.com](http://www.ngkf.com)

# Office Suite for Sublease

10020 N. DeAnza Blvd, Suite 200  
Cupertino, CA

Monument Signage



Building Lobby



**Derek Yep** 408.987.4106 [dyep@ngkf.com](mailto:dyep@ngkf.com) CA RE License #01476099  
**Lori Sweeney** 408.982.8491 [lsweeney@ngkf.com](mailto:lsweeney@ngkf.com) CA RE License #01204105  
**Tom Sweeney** 408.982.8493 [tsweeney@ngkf.com](mailto:tsweeney@ngkf.com) CA RE License #00989779  
**Conor Boone** 408.987.4110 [cboone@ngkf.com](mailto:cboone@ngkf.com) CA RE License #02089370



3055 Olin Avenue, Suite 2200, San Jose, CA 95128

[www.ngkf.com](http://www.ngkf.com)

The distributor of this communication is performing acts for which a real estate license is required. The information contained herein has been obtained from sources deemed reliable but has not been verified and no guarantee, warranty or representation, either express or implied, is made with respect to such information. Terms of sale or lease and availability are subject to change or withdrawal without notice.